



**Carolina BioOncology Institute**  
CANCER RESEARCH CLINIC



# PATIENT GUIDEBOOK

Version 4.0



9801 Kinsey Ave. Suite 145, Huntersville, NC 28078



Ph: 704-947-6599 Fax: 704-947-6597



[www.carolinabiooncology.org](http://www.carolinabiooncology.org)

[www.biocytics.com](http://www.biocytics.com)

# TABLE OF CONTENTS

## PAGES

01	Our Founder – John Powderly, MD	01
02	Our History	02
03	Immune System Basics	03
04	Cancer Basics	04
05	Immunotherapy Basics	05
06	Immunotherapy vs. Chemotherapy	06
07	Cancer Clinical Trial Basics	08
08	Consultation	10
09	Beginning your Treatment	11
10	Prepare a Treatment Bag	12
11	Call for Emergency	13
12	Important Information Regarding appointments	14
13	Additional Research Opportunities	15
14	Leukapheresis	17
15	Executive Medicine	19
16	BioBank	20

## APPENDIX

i	Reasons to Call Provider or Nurse	22
ii	Restaurants Nearby	23
iii	Hotels Nearby	24



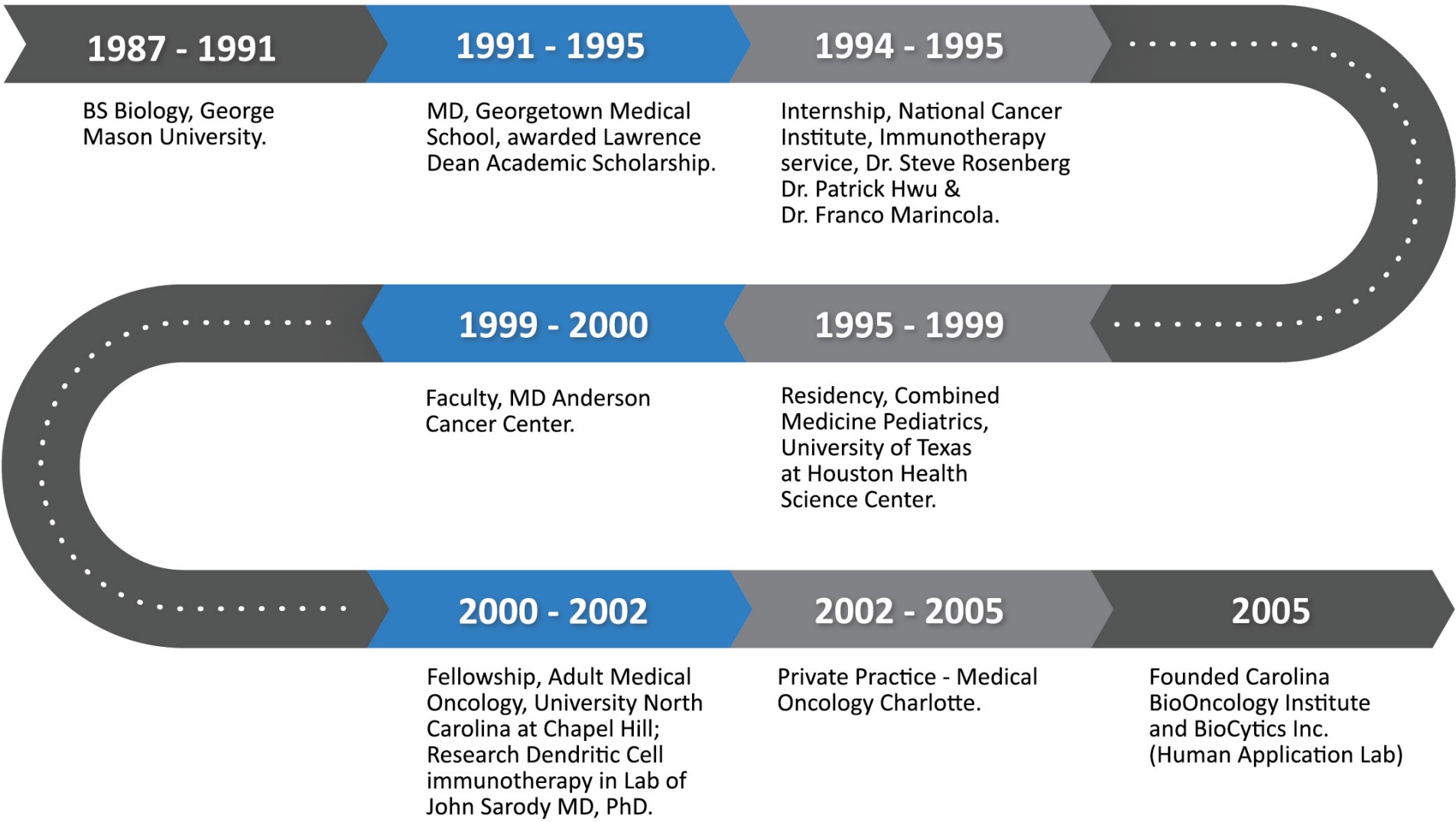
# OUR FOUNDER

## John D. Powderly, MD

Dr. John Powderly is a renowned immuno-oncology researcher and medical oncologist with more than 20 years of experience. Since opening the doors of Carolina BioOncology Institute (CBOI) in 2005, Dr. Powderly has conducted over 140 Phase I clinical trials.

In 2005, he founded a Human Application Lab (HAL) known as BioCytics Inc., with the mission to advance cellular immunotherapies and personalized medicine to patients.

Dr. Powderly is an adjunct professor at UNC Chapel Hill and Duke, has authored of over 75 scientific publications, and is a recipient of numerous honors and awards.



# OUR HISTORY



Dr. Powderly founded CBOI in 2005 as a community-based clinic and the only independent cancer center on the East Coast providing cutting edge immuno-oncology phase I clinical trials. In addition, in 2005 he founded the Human Applications Laboratory (HAL), called BioCytics, Inc., which is incubated within CBOI. HALs mission is to research and develop novel cellular therapies for diseases and to accelerate personalized medicine options to the patients we serve.

Dr. John Powderly's passion to advance cancer research stemmed from his extensive research and training. CBOI's mission is to provide patients with the highest level of comprehensive and quality cancer care. To accomplish this, we work as a team, with health and safety as our primary priority. We strive to provide cutting-edge access to the immunotherapy pipeline of clinical trials. As a result, we offer a vast array of phase I immuno-oncology and cellular therapy clinical trials for stage IV patients with all solid tumor cancers.

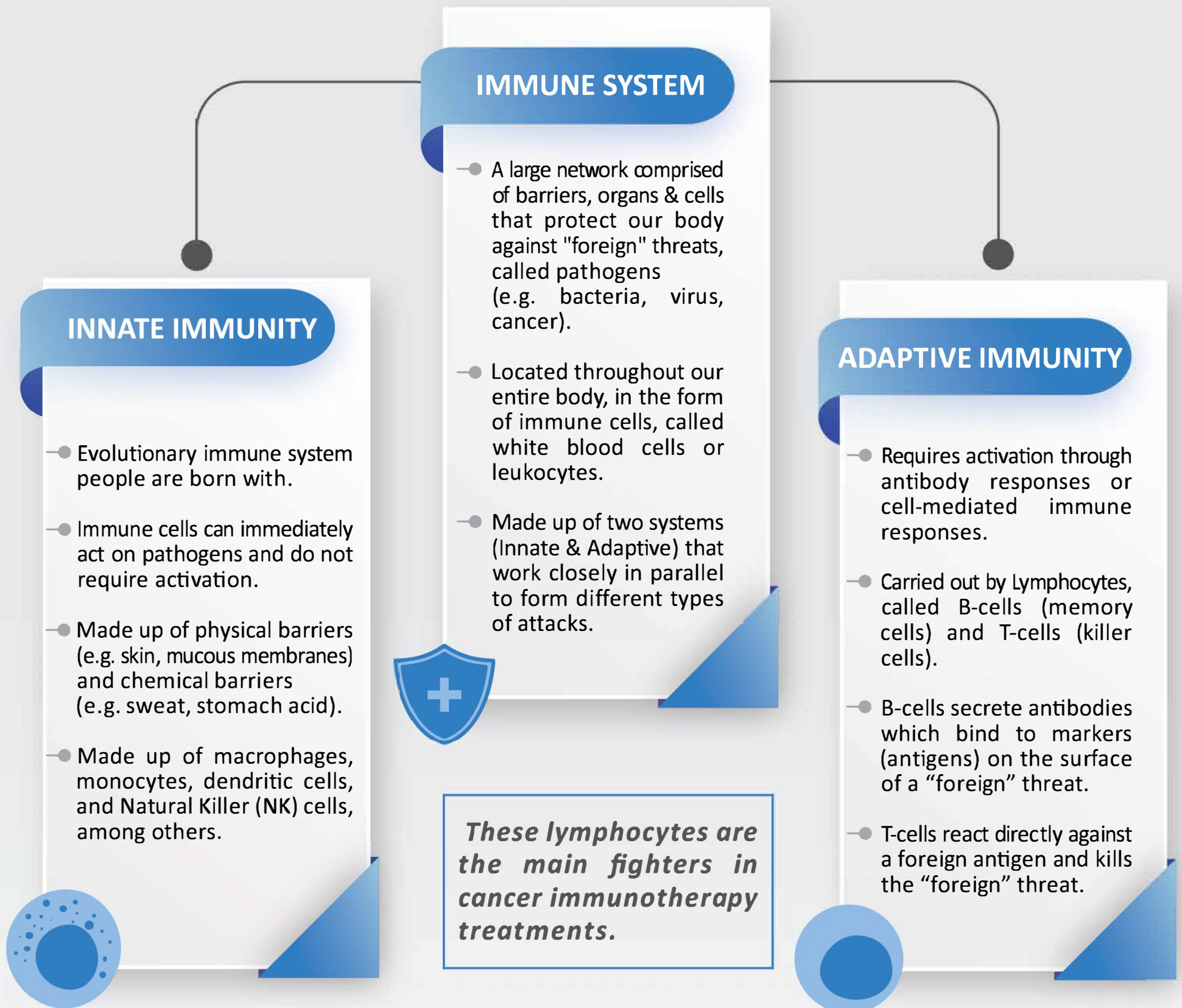
## OUR MISSION

***"Through Respect and Unity,  
we Initiate Innovation and  
Persevere into Excelsior for  
our patients!"***





# IMMUNE SYSTEM BASICS



## HOW DOES OUR IMMUNE SYSTEM WORK?



The immune system has checks and balances so that it is neither overactive nor underactive.

The immune system acts on 2 main types of pathways: inhibitory or stimulatory.

Immunotherapy targets or enhances these pathways.

# CANCER BASICS

## NORMAL CELLS

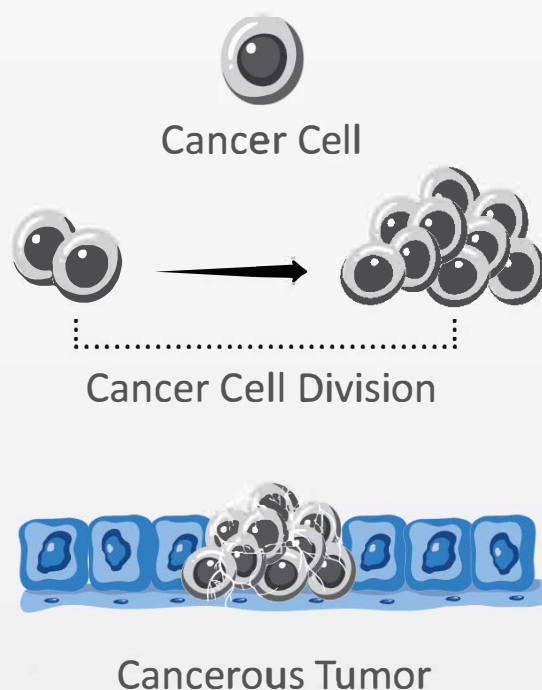
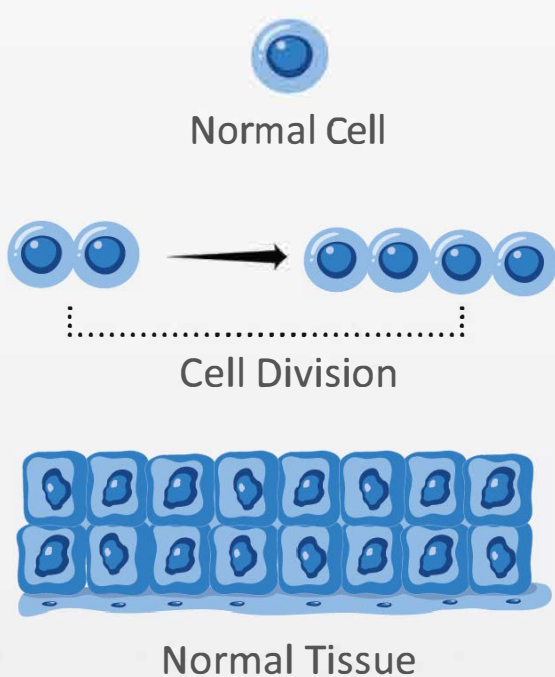
- Divide in an orderly way.
- Die when damaged, through a natural process called apoptosis.
- New cells will take their place.

## CANCER CELLS

- These are altered “self” cells are caused by mutations to genes that control our cell function (e.g. how they grow and divide).
- Mutations can occur due to tobacco use, diet, viral infections & environmental exposures (e.g. ionizing radiation, pesticides).
- Cancerous cells rapidly divide forming tumors which can spread throughout the body, known as metastasis.

## CANCER PROGRESSION & IMMUNE EVASION

- This division is due to the immune system’s lack of recognition known as immune escape.
- As cancer escapes the immune system, formation of more tumors can occur throughout your body, known as metastasis.
- Cancer staging (stages 1-4) is dependent on where the cancer has spread. Stage 4 is synonymous of metastatic cancer that has spread to distant organs.



## HOW DOES CANCER ESCAPE OUR IMMUNE SYSTEM?

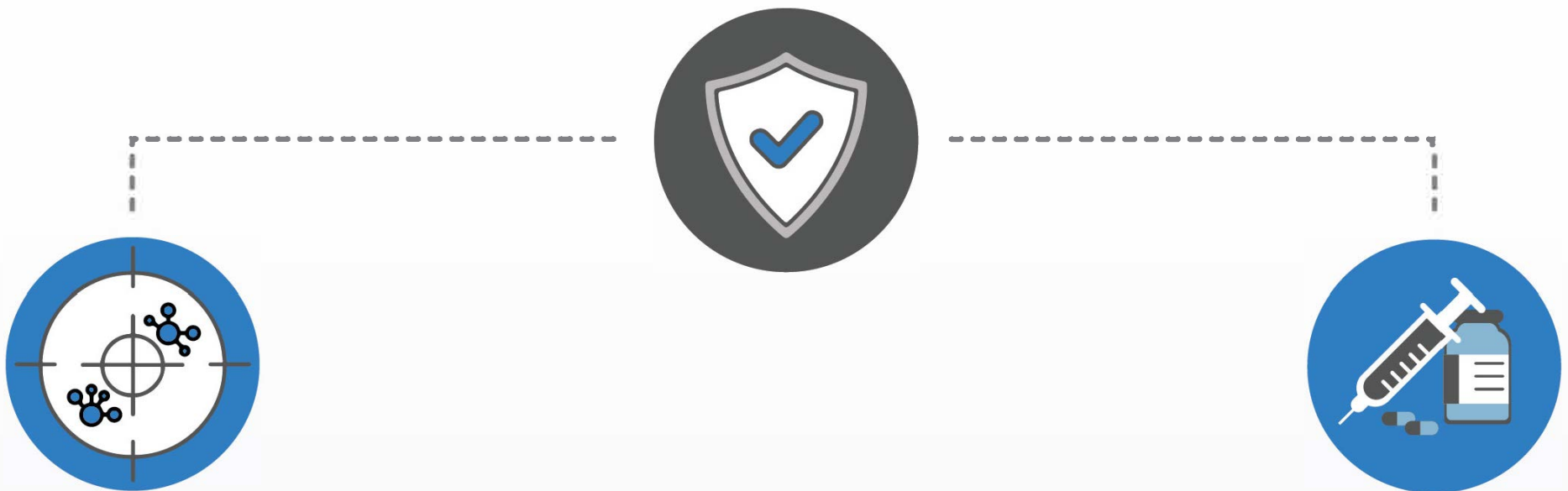
Influencing other cells to suppress our immune system

Putting up a barrier to turn OFF our immune system

Hiding its identity



# IMMUNOTHERAPY BASICS



## WHAT IS IMMUNOTHERAPY?

Immunotherapy is a broad term that describes different treatments that change the body's immune response or use components of the immune system to attack the body's own cancer cells.

## HOW DOES IMMUNOTHERAPY WORK?

Interfering with a cancer cell's ability to hide (Inhibitory Pathway).

- To prevent autoimmune activity (or overactivity), immune checkpoints are in place that work like the brakes of a car to slow the immune system from becoming too active.
- One of cancer's masks = putting up a barrier to turn off the immune system by producing these immune checkpoints.
- Some immunotherapy treatments, called immune checkpoint inhibitors, bind with the immune checkpoint markers to RELEASE the BRAKES of the immune system so it can target/attack the cancer cells.
- Examples of these checkpoint inhibitors:
  - Keytruda (pembrolizumab)
  - Opdivo (nivolumab)

Activating and amplifying immune cells (Stimulatory Pathway).

- Some immunotherapy medications can be characterized as co-stimulators.
- As previously discussed, there are many different types of immune cells, e.g. B and T cells. These cells have specific markers on their surface which become activated when co-stimulators bind to the markers on the cell's surface.
- Once the immune cells are activated, they will begin their attack on the cancer cells, or PRESS on the immune system's GAS PEDAL.
- Examples of stimulatory antibodies:
  - Still in early phase development
  - mAb OX-40 and 41BB

# IMMUNOTHERAPY VS. CHEMOTHERAPY



## IMMUNOTHERAPY

### MAINTENANCE THERAPY

- Cancer immunotherapy is an innovative therapeutic approach to treat cancer by mobilizing a patient's own immune system.
- Immunotherapy could be given alone or in combination with other cancer treatments.
- Allows the immune system to recognize the characteristics of the cancerous cells, which makes remission longer-lasting.
- Potential side effects consist of an overstimulated or misdirected immune response, and could cause the immune system to attack itself (e.g. autoimmune inflammation).



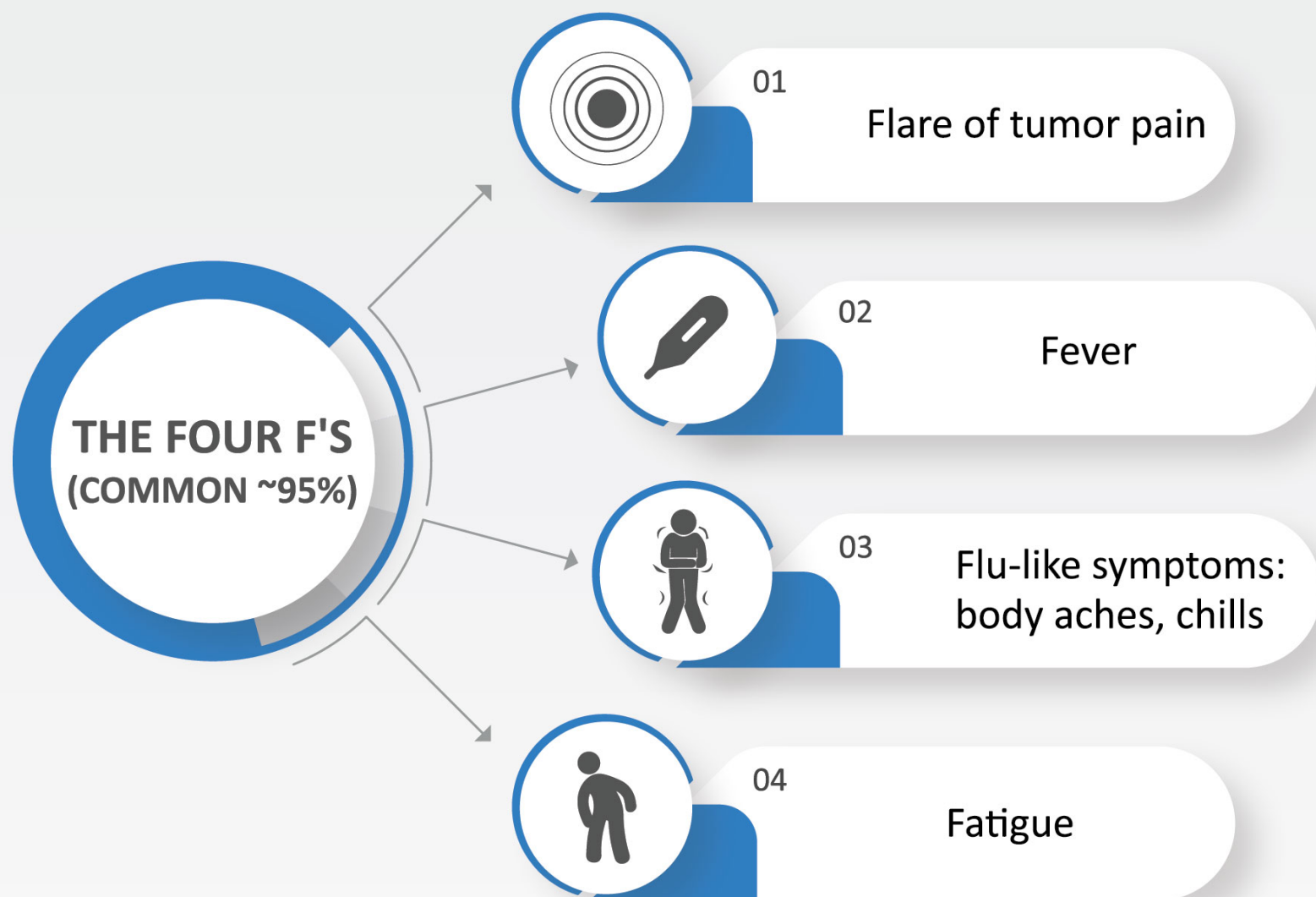
## CHEMOTHERAPY

### SHORT-TERM THERAPY

- Treatment that targets and attacks rapidly dividing cells within the body, including fast-growing cancerous tumors.
- Chemotherapy could be given alone or used in combination with surgery, radiation or immunotherapy.
- Organ systems that have rapidly dividing cells are most affected, such as hair follicles and the lining of the gut.
- Treatment effects last as long as the drug remains in the body.



## GENERAL SIDE EFFECTS OF IMMUNOTHERAPY



Typically well-controlled with Tylenol/ibuprofen.

More severe side effects are managed with steroids (prescribed by provider) which relax the immune system, preventing overstimulation.

### OLD "ITIS" RE-FLARE = OLD INFLAMMATIONS RECUR (LESS COMMON)

e.g. An old knee injury from sports, may begin to hurt again once on immunotherapy  
Typically well-controlled with Tylenol/ibuprofen.



### NEW "ITIS" CAN DEVELOP --> AUTOIMMUNE EFFECT (RARE BUT SERIOUS)

The immune system becomes too strong, it will attack itself.  
High-dose steroid taper over a few weeks will help reverse this side effect.  
This will cause a held dose of study drug or permanent discontinuation of treatment.



# CANCER CLINICAL TRIAL BASICS

New cancer drugs or new combinations of cancer drugs are studied to determine the safety and effectiveness against cancer. This leads to new treatments and/or improved quality of life for patients living with cancer.

All clinical trials must go through multiple phases before the drug can be sold commercially.

**At our clinic, we perform Pre-Clinical and Phase I Clinical Trials.**



## PRE-CLINICAL AND NON-THERAPEUTIC

.... Discovery stage in research that explores if and how a new drug may work. Consists of laboratory research. Refer to pages 15-21 for more detail. Often called “First in Human (FIH).”



## PHASE 1

.... The cancer drug or drug combination is tested in humans for the first time. Explores the safety and safe dosages of the drug.



## PHASE 2

.... The cancer drug or drug combination is targeted towards specific cancer types. Explores the safety and efficacy of treatment.



## PHASE 3

.... Made up of larger population. Explores the benefits, confirms effectiveness, monitors side effects and compares to available treatments. Usually has randomized arms, study drug vs. standard of care.



## FDA APPROVAL

.... New drug application is reviewed by the FDA. The FDA either approves or denies approval for the drug to be marketed or sold in the U.S.



## PHASE 4

.... The cancer drug has been approved by the FDA. Explores the long-term effects, the benefits, risks and use. Sometimes called “real world data” or “Pharmacovigilance.”



# CONSULTATION

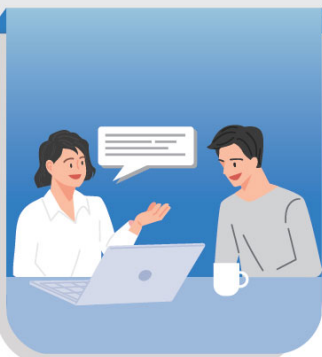
## HOW DO I GET ON A TRIAL?

Our providers are committed to providing each patient the highest level of care. We believe in treating the person, not just the disease. Please plan to be at the clinic for 3-4 hours on the day of your initial consultation. During this time, our providers will spend time reviewing your medical and treatment history in depth along with any clinical trial recommendations. Remember to review your history of specific treatment dates, providers you have seen and biopsy dates.



### THE REVIEW

Once a trial is available, your records will be reviewed to confirm you are a candidate for the trial through a "prescreening" process.



### THE OVERVIEW

The CRC will provide you with a detailed overview of the trial, visit schedule and a copy of the **Informed Consent Form (ICF)**.

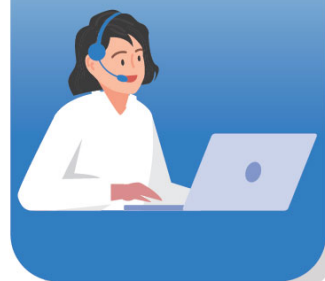


### THE SCREENING

This visit varies. In general, you will be asked to complete lab work, CT scans and an exam with one of our providers. A biopsy is sometimes required.

### THE CALL

Once it is confirmed that you are a candidate for the trial, a Clinical Research Coordinator (CRC) will contact you.



### THE SCHEDULING

If you decide to enroll in the trial, the CRC will work with you to schedule a "consent and screening" visit.



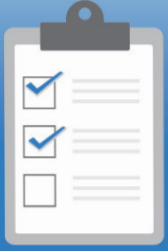
## INFORMED CONSENT

The Informed Consent Form or ICF is a form used in clinical trials to explain risks, benefits, side effects and other details regarding your study. It is important that you understand this information and are fully informed prior to starting your trial. We urge you to take this information home and review it with your family and any other medical providers involved in your care.



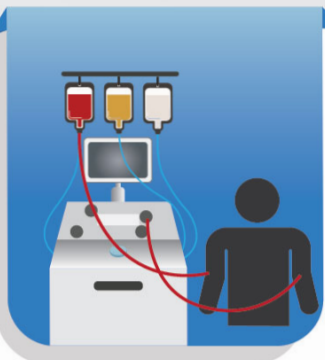
\* To help navigate through this new journey, CBOI has an Ambassador Patient Program. You are able to meet/speak with other patients that have gone through similar experiences. You may also volunteer for the Ambassador Patient Program in future.

## WHAT IF I AM WAITLISTED?



Occasionally, based on your history, a clinical trial may not be immediately available. You may be placed on our wait-list until a suitable clinical trial becomes available.

We will contact you every 2-4 weeks during this time. It is important for us to know if there have been any changes related to your health or if you have started a new cancer treatment.



While you are awaiting a clinical trial, leukapheresis may be offered to you. Please see page 17 for more details.



### **\*\*NOTE:**

The majority of clinical trials require a 3-4 week "wash-out" period from your last dose of anti-cancer treatment.



# BEGINNING YOUR TREATMENT

The first day receiving the study drug is called, "Cycle One Day One". Though this day varies from trial to trial, it generally consists of the same procedures and is often the longest appointment. The visit will likely be an all-day visit from 7:30am-5:00pm.



1

Arrive in waiting room to be checked in. You will then go to intake area for vitals and blood work.



3

A provider will meet with you to answer any questions and confirm it is safe to proceed with dosing.



5

Before discharge, you will be given instructions on symptom management and when to call the clinic, if needed.



2

A nurse will meet with you to review current symptoms and perform "teaching" of first drug administration.



4

You will be monitored throughout your visit for safety.



# PREPARE A TREATMENT BAG

Your treatment visits can vary in length. A visit can last from 1 hour to an entire day so it is always a good idea to prepare a treatment bag to bring to each visit!

## ITEMS TO BRING ON TREATMENT DAYS:



ALL MEDICATIONS (home, pain, study medicines, etc.)



Books, magazines, crossword puzzles, Sudoku



Laptop, tablet, iPad – with headphones (we have free WiFi)



Blanket/pillow



Comfortable clothes, sweatshirt/sweater/socks (the infusion room can get chilly!)  
Please keep in mind the location of your port and wear clothing to allow getting to your port easy! (scoop-neck shirts, button-up shirts, etc)



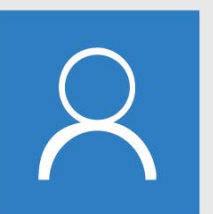
Things to pass time:  
Knitting/crocheting, coloring books, drawing pads



Snacks and drinks.  
There is a variety of small snacks and drinks provided in the infusion room for patients, but please feel free to bring anything that you personally enjoy snacking on



Hard candy/mints  
If you are prone to nausea when your port is flushed with saline or heparin, hard candy and mints usually help!



A friend or family member



Something that will make you feel at home



Something inspirational and encouraging



A positive attitude!

\*\* Please refrain from wearing heavy perfume/cologne as this may affect other patients in the treatment area.  
Thank you for your consideration! \*\*



# PLEASE CALL IF EXPERIENCING ANY OF THE FOLLOWING:



.... Fever and chills: a temperature of 101°F or greater and/or chills.



.... Diarrhea: more than 3 loose, watery stools in 24 hours.



.... Increased work of breathing/shortness of breath.



.... Uncontrollable nausea/vomiting.



.... Uncontrolled, excessive, or unexplained bleeding or bruising.



## **IV/Port site reactions:**

.... redness, swelling, blistering, and/or sensitivity around your IV site or port.



## **Signs of infection:**

- Pain, burning, hesitancy, and/or frequency when you urinate.
- A productive cough and/or runny nose containing green or yellow sputum.
- An earache occurring in one or both ears.
- Red, swollen, or painful areas appearing on your skin.

---

Nurse Line: **(704) 947-6599** (Option 2)

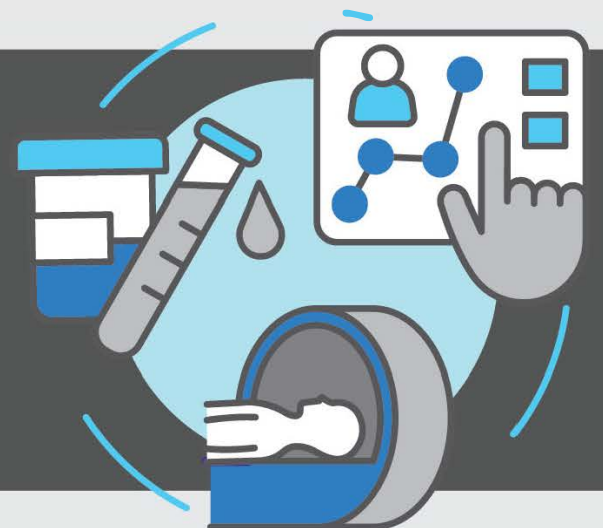
For Off-Hours: **(704) 947-6599** (Option 8)

For Medical Emergencies: **911**

# IMPORTANT INFORMATION TO KNOW REGARDING YOUR FIRST AND OTHER APPOINTMENTS:

- Please bring a spouse, family member or friend to your office visits if possible.
- Lab and scan results will not be reported via phone call or email. All results will be reviewed and discussed at your next office visit.
  - To view your results, please set up your portal accounts at:
    - <https://patient.labcorp.com/landing> (for certain labs)
    - Novant myChart access (for scans)
- Study-related items covered by the trial sponsor:
  - All trial-required visit procedures performed at CBOI
  - Reimbursement for travel including mileage and hotel costs (up to \$150)
  - Study required biopsies
- Study-related items not covered by the trial sponsor:
  - CT scans/MRIs – scans will be billed to your insurance. You will be responsible for any deductible or out of pocket cost incurred. If denied by insurance or you are uninsured, we will work with the trial sponsor to cover the expense
  - Additional labs that Dr. Powderly may add that are not required by protocol (i.e. tumor marker, other safety labs, etc.)
  - Other standard of care procedures needed to manage symptoms (e.g. paracentesis, thoracentesis)
  - Rental car and food costs

\*\* It is very important to keep your primary medical oncologist updated on your clinical status. We will send our notes often. It is important for you to be seen by them every 2-3 months. Your journey is a team effort and we all must work together to provide the best quality care.





## ADDITIONAL RESEARCH OPPORTUNITIES



BioCytics, meaning applications of living cells, is a privately-held biotechnology company located in Huntersville, North Carolina. BioCytics is clinically-incubated by Carolina BioOncology Institute Cancer Research Clinic.

BioCytics 0001 is a **pre-clinical and non-therapeutic** in-house clinical trial developed by Dr. John Powderly and led by Dr. Powderly and his own team of clinical research coordinators, PhD tumor-immunologists & biomedical engineers. This protocol enables CBOI to isolate and culture primary patient tumor cells from biopsies, discarded fluid, circulating tumor cells (CTCs) or lymphocytes.

# BIOCYTICS 0001: CLINICAL TRIAL FOR LABORATORY RESEARCH

## RESEARCH GOALS:

- To find new ways to detect cancer.
- Study the causes of cancer.
- Understand how different individuals respond to different immunotherapies/ cancer treatments.
- Develop new cancer cellular immunotherapies.

Enables CBOI to isolate and culture primary patient tumor cells from:

1. Biopsy
2. Pleural effusion/ ascites fluid
3. Circulation

Allows for the in-house collection and processing of patient blood product for:

1. Leukapheresis (Refer to Page 17).
2. Whole blood for "peripheral blood mono nuclear cells" (PBMC) and "circulating tumor cells" (CTC) isolation synonymous of metastatic cancer.



## OUR VISION - UNDER ONE ROOF

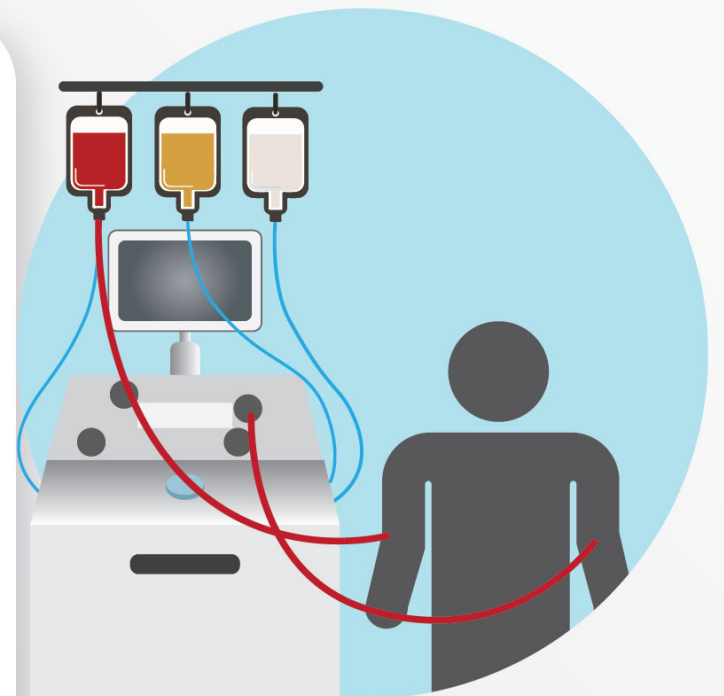
*Our vision is to develop effective, affordable, and accessible T-Cellular Therapies to treat solid tumors under ONE roof.*



# LEUKAPHERESIS

## PROCEDURE

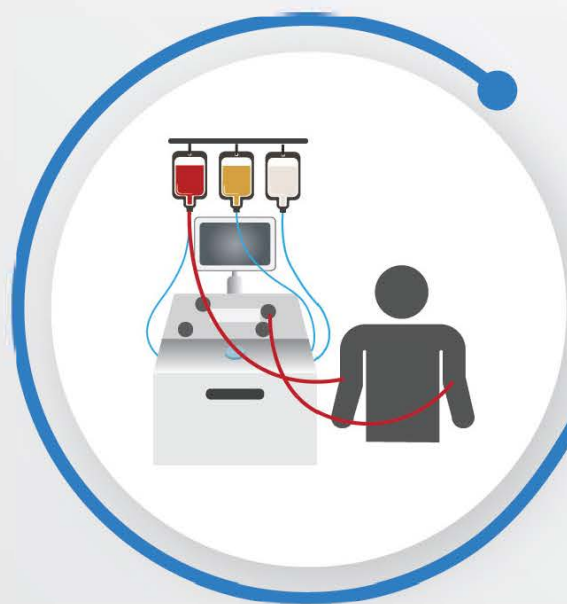
Leukapheresis is the procedure of the removal of the immune cells, otherwise known as the white blood cells. This is a 90-min procedure in which blood will be drawn directly from a venous blood vessel then travels through a tubing set which never encounters air. This tubing set is hooked up to an FDA approved apheresis machine which contains a centrifuge that separates your blood into its different cellular components based on their specific density (weight). Your white blood cells, along with some platelets are collected in a small bag, while the rest of your cells and plasma are subsequently returned to you through a needle or catheter placed in your opposite arm. The overall appointment takes approximately 3-4 hours due laboratory and provider examination prior and after the procedure. This procedure is done prior to a patient entering a Phase I trial or in between washout periods.



## SIDE EFFECTS

An anticoagulant solution (citrate) is utilized to prevent clotting and can cause mild side effects such as slight "tingling of fingertips/toes or around your mouth", nausea, and a cold sensation. These side effects are caused due to a binding of calcium by the citrate as the anticoagulant slowly makes its way through the tubing set and into your circulation. To prevent these symptoms, a calcium tablet (such as tums) is given to you prior to the start of the leukapheresis collection. Please ask your study coordinator or nurse about any questions or concerns you may have.

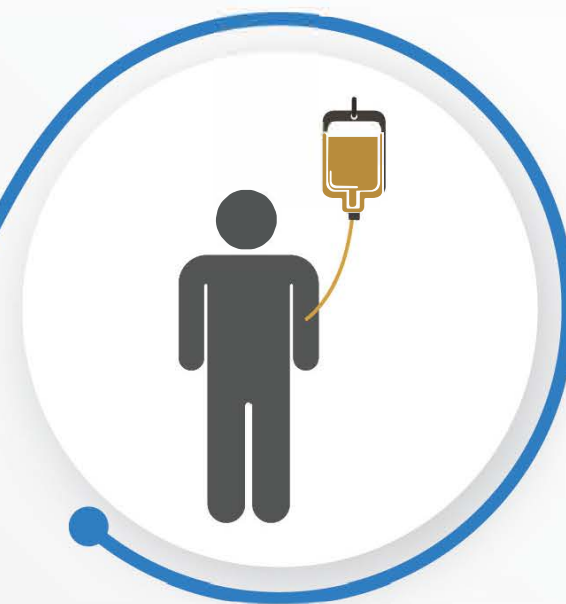
## 1 LEUKAPHERESIS



## 2 GROW



## 3 INFUSE



With our goal to expand, grow, and dose patients, Leukapheresis allows us to advance our in-house research by further understanding how the immune system identifies and fights cancer cells.

On day of the procedure, please remember to:

- Eat a good, BIG breakfast prior to coming in.
- Continue to hydrate.
- Wear comfy clothes. Often the donation room is chilly.
- Wear clothing that we can easily access your elbows for the IV placement.
- Do light arm curls, as this helps plump up your veins for easier IV access.

Inform us prior to your appointment if:

- You're taking any new medications, bone meds (Zometa or Xgeva) or blood thinners (Eliquis, xarelto, etc.)
- You have had any procedures (i.e. port placement) done in the last two weeks prior to coming in for your leukapheresis appointment.
- You are on your menses or any bleeding symptoms.



## OPTIONAL EXECUTIVE MEDICINE SERVICES

Our services expand beyond the clinical research aspect, we now offer additional dedicated visits to discuss our optional executive medicine opportunities. These additional appointments are approximately an hour-long visit with our providers. Each appointment is billed out-of-pocket, however specific types of testing and collections could be billed through insurance if applicable. Appointments could also be done virtually to better accommodate our patients.

### EXECUTIVE MEDICINE CONSULT

In-depth discussion with our Oncology providers into the types of collections, testing available and the potential benefits of more in-depth laboratory "genomic" personalized services and biobanking.



### COLLECTION

- Blood and/or tumor is sent out to patients for specific testing, such as Whole genome DNA or RNA sequencing<sup>3\*</sup> and germline testing<sup>1\*</sup>.
- In office collections include blood draws, leukapheresis, saliva, or scheduling of tumor resections (TILs<sup>2\*</sup>) and/or biopsies.



### EXECUTIVE MEDICINE RESULTS CONSULT

- In-depth discussion of your genomics results with Dr. Powderly.
- Trial matching consult, with trial selection from in-depth review on [www.clinicaltrials.gov](http://www.clinicaltrials.gov).
- Cellular therapy opportunities on [www.clinicaltrials.gov](http://www.clinicaltrials.gov).



- 1\* Germline testing is a form of genetic testing done to evaluate an inherited cancer syndrome. We have collaborated with companies to offer these services to our patients and their families.
- 2\* Tumor Infiltrating Lymphocytes (TILs) is a form of assessment that evaluates the lymphocytic cell population within tumor tissues and predicts the efficacy and response of treatments.
- 3\* Whole Genome Sequencing is the process of analyzing the unique mutations and genomic alterations in cancer tissue by looking at the DNA or RNA.

## OPTIONAL EXECUTIVE MEDICINE SERVICES (CONTINUED)

BioCytics specializes in storing your immune and tumor cells, so they remain in the best viable condition when you need them the most. Personalized medicine starts with the understanding that no cancer types are the same. All tumors are unique and must be treated as such. Banking your cells can occur at any time and are yours to use at your discretion. Our banking fees include a state-of-the-art facility, vapor phase LN2 long-term storage, 24-hour temperature monitoring, back-up generator, Certificate of Authentication (C oA), quality assurance, routine quality controls, data quality, integrity and security oversight. Our team of coordinators, clinicians, and scientists are here to help execute any desired testing and discuss your options in detail through our executive medicine services.

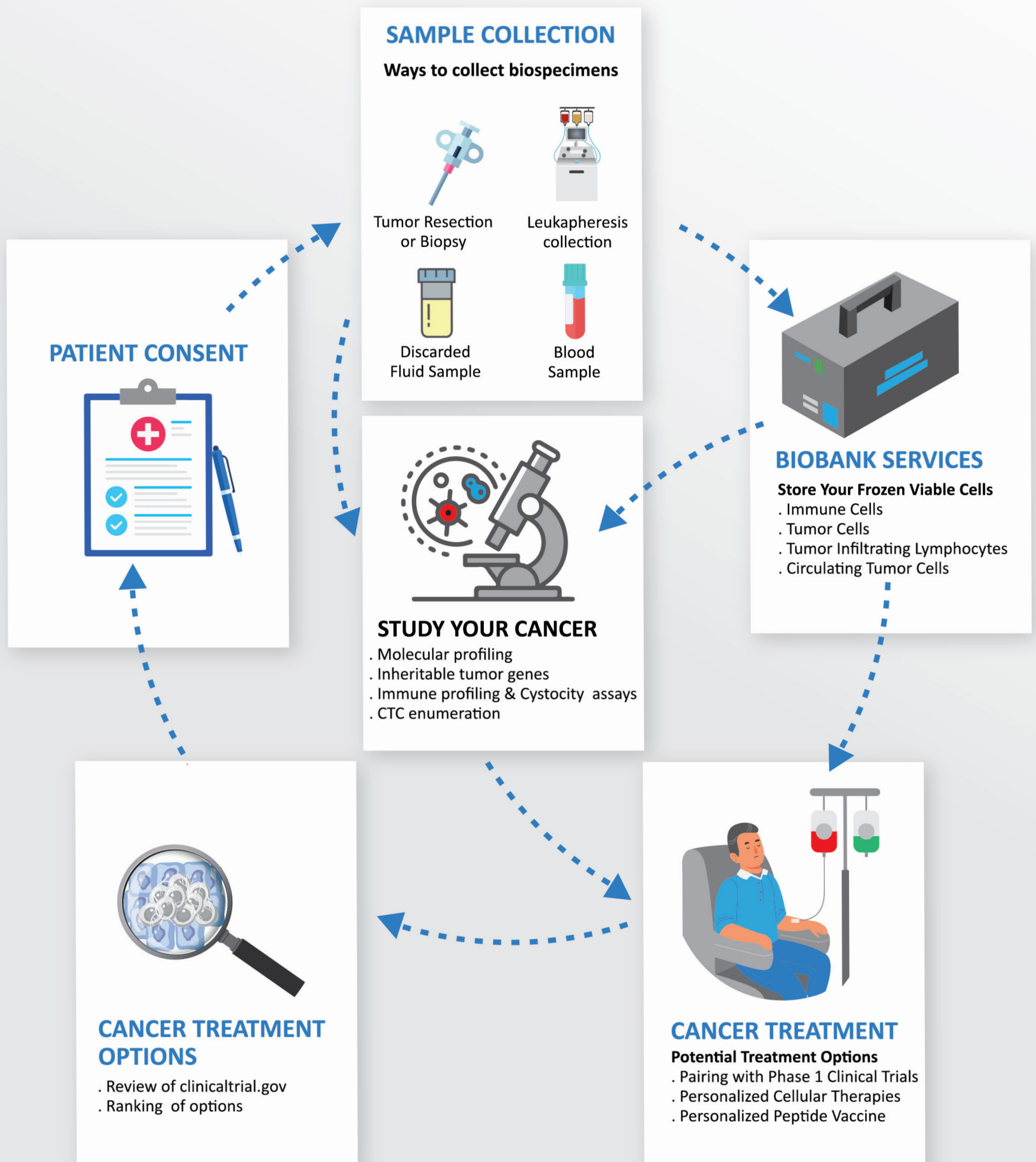
### POTENTIAL BENEFITS OF EXECUTIVE MEDICINE PERSONALIZED SERVICES AND BIOBANKING INCLUDE:

- Learn how your tumor grows, through video microscopy
- Learn how your tumor evades your immune system
- Learn how your immune cells may mount an immune response against your tumor
- Learn what mutations drive your tumor
- Learn if your tumor is acquired vs genetic
- Learn what cutting edge research clinical trials are available by in-depth review of [www.clinicaltrials.gov](http://www.clinicaltrials.gov) based on your tumor mutational markers
- Learn more about personalized innovative immunotherapeutic treatments, like personalized vaccines or cell therapies
- Bank your immune cells and tumor cells separately





# OPTIONAL EXECUTIVE MEDICINE SERVICES (CONTINUED)



## — APPENDIX —

### REASONS TO CALL YOUR ONCOLOGY PHYSICIAN OR NURSE



If there is an emergency, please call **911**  
Please do not leave messages on the nurse line for emergencies.

Nurse Line: **(704) 947-6599** (Option 2)

For Off-Hours: **(704) 947-6599** (Option 8)

It is common to experience side effects from your treatment. However, there may be severe side effects that may warrant the need for immediate medical attention. It is important that you and your family/friends are aware of these potential side effects and know when to contact your physician or nurse.

During office hours, please contact our office at **(704) 947-6599**.  
Follow the prompts for the nurse line to report your side effects.

After hours, listen for the prompts to tell you how to contact the physician on call.

For non-urgent matters or questions, you may email us  
at **info@carolinabiooncology.org**



# PLACES TO EAT

## FAST FOOD



NAME	ADDRESS	CONTACT	DISTANCE
<b>Five Guys</b>	9826 Gilead Rd, Huntersville, NC 28078	704-992-2033	200 ft
<b>McDonald's</b>	14220 Boren St. Huntersville, NC 28078	704-875-9020	700 ft
<b>Wendy's</b>	14139 Statesville Rd. Huntersville, NC 28078	704-948-9055	0.5 mi
<b>Bojangles'</b>	335 Huntersville Gateway Boulevard Huntersville, NC 28078	704-948-0079	0.6 mi
<b>Waffle House</b>	14106 Statesville Rd. Huntersville, NC 28078	704-875-8980	0.6 mi
<b>Cook Out</b>	425 Huntersville Gateway Blvd Huntersville, NC 28078	704-875-0077	0.7 mi

## DELI'S



<b>Firehouse Subs</b>	9826 Gilead Rd. Unit C-102 Huntersville, NC 28078	704-992-2282	350 ft
<b>The Original New York Bagels</b>	9810 Gilead Rd. Huntersville, NC 28078	704-948-7668	500 ft
<b>Jimmy John's</b>	14139 Statesville Rd. Huntersville, NC 28078	704-992-5994	0.2 mi
<b>Jersey Mike's Subs</b>	105 Statesville Rd. Unit C Huntersville, NC 28078	704-948-7343	0.7 mi

## ITALIAN



<b>Hawthorne New York Pizza &amp; Bar</b>	14205 Reese Blvd E2-4, Huntersville, NC 28078	704-992-1661	600 ft
<b>Rocky's Pizza</b>	10310 Wilmington St, Huntersville, NC 28078	704-727-5080	0.6 mi
<b>Mama's Pizza Express</b>	14132 Statesville Rd. Huntersville, NC 28078	704-947-3223	0.7 mi
<b>Slice House Pizza</b>	101 Old Statesville Rd. Huntersville, NC 28078	704-274-926	1.2 mi
<b>Mama Mia Too</b>	101 Maxwell Avenue Huntersville, NC 11217	704-875-0575	1.3 mi

## MEXICAN/ SPANISH



<b>Verde Mexican Nuevo Latin Fusion</b>	9819 Gilead Rd B107, Huntersville NC 2878	704-274-9192	450 ft
<b>Sabor Latin Street Grill</b>	14230 Reese Blvd W. Huntersville, NC 28078	704-727-0018	0.2 mi
<b>Las Meras Tortas</b>	14601 Statesville Rd. Huntersville, NC 28078	704-727-0928	0.8 mi
<b>La Nortenita</b>	500 N Old Statesville Rd. Huntersville, NC 28078	704-507-5919	1.5 mi

## ASIAN



<b>Yoshi's Sushi Restaurant</b>	9826 Gilead Rd. Huntersville, NC 28078	704-947-5233	300 ft
<b>Jin Jin Chinese Restaurant</b>	14231 Market Square Dr. Huntersville, Nc 28078	704-875-0027	800 ft
<b>Sushi Star</b>	9905 Rose Commons Dr. Huntersville, NC 28078	704-948-7877	0.2 mi
<b>Pho Ginseng</b>	12905 Rosedale Hill Ave, Huntersville, NC 28078	704-992-2227	0.2 mi
<b>Fusion 108</b>	10010 Rose Commons Dr. Huntersville, NC 28078	704-992-0808	0.3 mi

## OTHER



<b>Pinky's Westside Grill</b>	9818 Gilead Rd B-101, Huntersville, NC 28078	704-727-0142	450 ft
<b>Metro Diner</b>	14211 Reese Blvd. Huntersville, NC 28078	704-912-1566	700 ft
<b>City Barbeque</b>	15425 Hodges Cir. Huntersville, NC 28078	704-274-1069	0.2 mi
<b>Killingtons Restaurant &amp; Pub</b>	10010 Rose Commons Dr. Huntersville, NC 28078	704-948-3770	0.3 mi

# NEED TO STAY OVERNIGHT?

- **Best Western Plus Huntersville Inn & Suites Near Lake Norman**

- 📍 13830 statesville Road, Huntersville, NC 28078
- 📞 704-875-7880
- 1.0 miles (4 minutes) from Carolina BioOncology Institute
- \*Call for Corporate rate: "Carolina Bio" (13% - 18%)*

- **Comfort Suites Lake Norman-Huntersville**

- 📍 14510 Boulder Park Dr., Huntersville, NC 28078
- 📞 704-875-6220
- 1.2 miles (5 minutes) from Carolina BioOncology Institute
- \*Call for Corporate rate: "Carolina Bio" \$89.00 plus tax*

- **Hampton Inn & Suites Huntersville**

- 📍 10305 Wilmington St, Huntersville, NC 28078
- 📞 704-947-5510
- 0.9 miles (6 minutes) from Carolina BioOncology Institute
- \*15% off with Corporate rate. Code: 0003246879*

- **Country Inn & Suites by Carlson, Lake Norman, NC**

- 📍 16617 Statesville Road, Huntersville, NC
- 📞 704-895-6565
- 3.2 miles (8 minutes) from Carolina BioOncology Institute
- \*Corporate Flat rate of \$89 + tax*

- **Super 8 by Wyndham**

- 📍 14135 Statesville Road, Huntersville, NC 28078
- 📞 704-875-1165
- 0.8 miles (3 minutes) from Carolina BioOncology Institute
- \*\$68 after tax-Mention "Carolina BioOncology"*

- **Econo Lodge & Suites Lake Norman**

- 📍 20740 Torrence Chapel road, Cornelius, NC 28031
- 📞 704-892-3500
- 6.5 miles (13 minutes) from Carolina BioOncology Institute
- \*10 - 15% off - call and mention "Carolina BioOncology"*

- **Homewood Suites**

- 📍 125 Harbour Place Drive, Davidson, North Carolina 28036
- 📞 704-987-1818

- **SpringHill Suites by Marriott**

- 📍 13610 Reese Blvd W Huntersville, NC 28078
- 📞 704-946-2950
- 0.4 miles from CBOI (2 minutes)





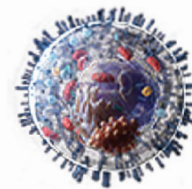
**FOLLOW US**



**Carolina BioOncology Institute**  
CANCER RESEARCH CLINIC



✉ [info@carolinabiooncology.org](mailto:info@carolinabiooncology.org)  
☎ 704.947.6599 PHONE  
🌐 [www.carolinabiooncology.org](http://www.carolinabiooncology.org)  
📍 9801 Kinsey Ave. Suite 145  
Huntersville, NC 28078



**BioCytics, Inc**  
HUMAN APPLICATIONS LABORATORY



✉ [info@biocytics.org](mailto:info@biocytics.org)  
☎ 704.947.6597 FAX  
🌐 [www.biocytics.com](http://www.biocytics.com)  
📍 9801 Kinsey Ave. Suite 145  
Huntersville, NC 28078

**in**



**f**

